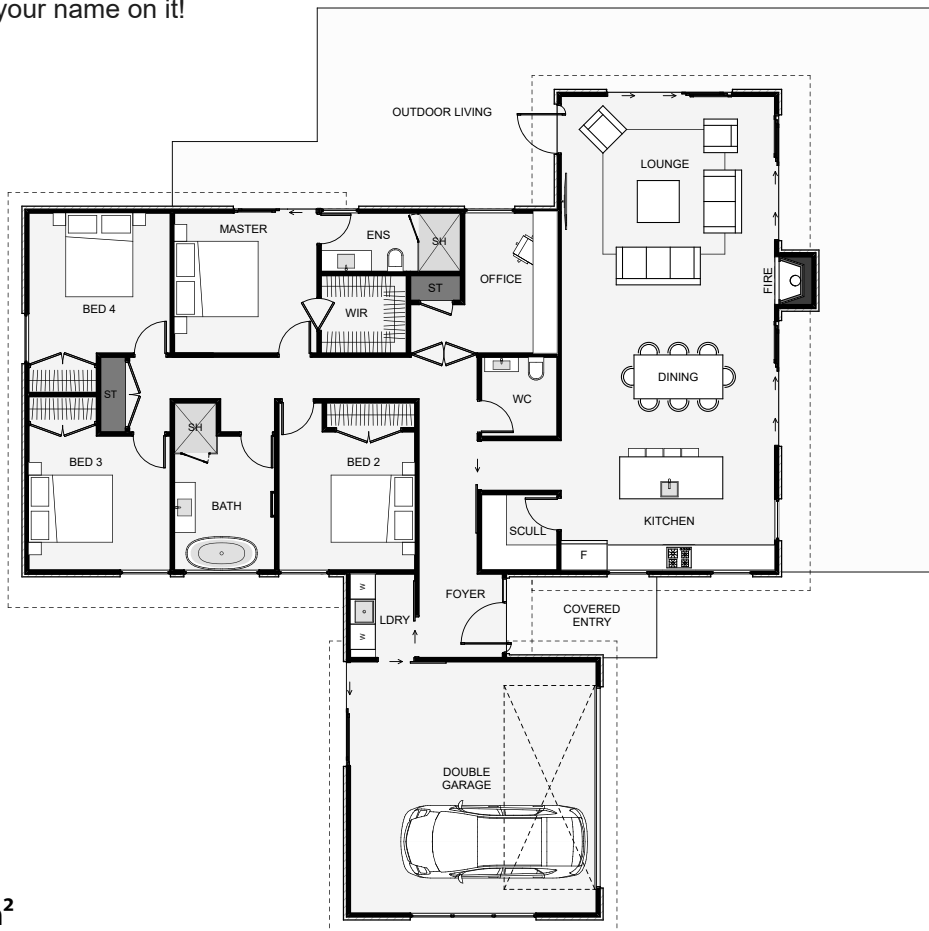




This home incorporates modern styling, strong brick forms and timber which help lift the roof-line. All this, paired with high glazing in the living, make this a home you cannot ignore. This design can be used in sections with driveways coming in from the east or west by simply flipping the garage, foyer and laundry if needed. Also if needed, an additional lounge can easily be added as an extra option. If you're after a four or even five bedroom home with some urban style, this may just have your name on it!



Floor Area: 217m<sup>2</sup>

2  
 4+  
 2.5  
 1

18.9m   19.7m

Contact us

Call Ben: 027 315 9165

E: [hello@falloonbuilders.co.nz](mailto:hello@falloonbuilders.co.nz)

[www.falloonbuilders.co.nz](http://www.falloonbuilders.co.nz)