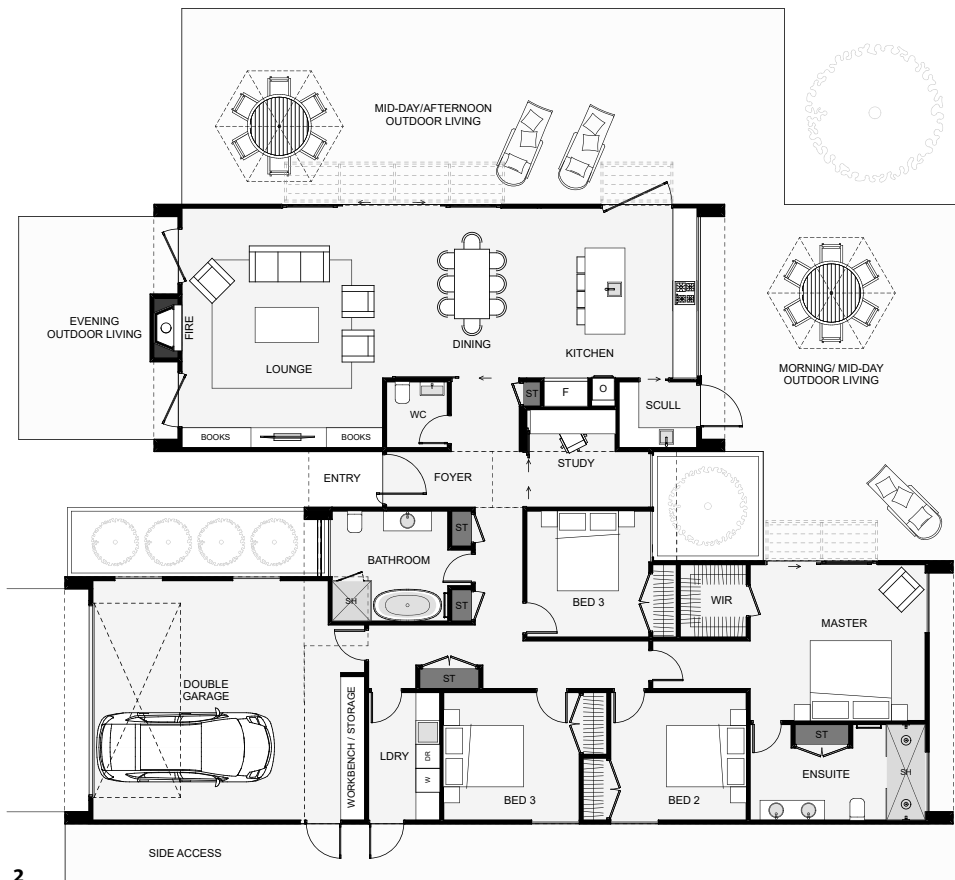




This modern four bedroom home has three core parts that make up its strong geometric frontage. When entering the foyer, a study slider can be opened so visitors can enjoy a view through full height glazing out to whatever centrepiece you desire. The dining takes in the morning sun from a large sliding window in the kitchen which drops right down to the bench level. Extra features include the scullery, a workbench within the garage and a large ensuite. If you're looking to build a bold home with a ton of features, this is it!



Floor Area: 240m<sup>2</sup>

2  
 4+  
 2.5  
 1  
 22.2m  
 15.5m

Contact us

Call Ben: 027 315 9165

E: hello@falloonbuilders.co.nz

www.falloonbuilders.co.nz