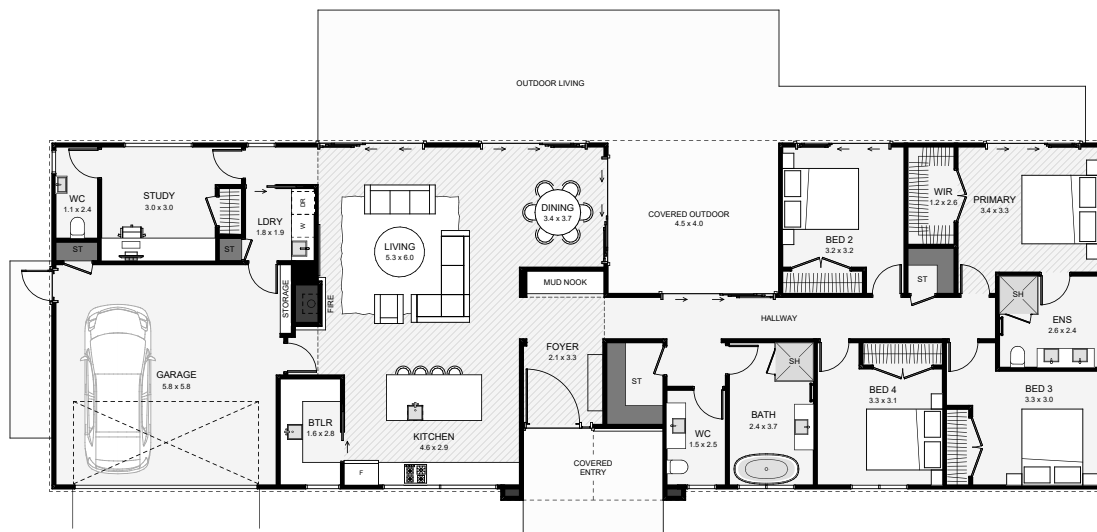




This home is where rustic charm meets modern ease, designed for both living and gathering. Wrapped in board-and-batten cladding with a corrugated roof, it welcomes you through a plaster and stone entry that hints at the warmth within. A spacious kitchen with a butler's pantry becomes the heart of the home, perfect for shared meals and conversations. With four bedrooms, a private office with its own toilet, and generous storage, it offers space to breathe, grow, and thrive. Thoughtfully crafted for those who want more than just walls—this is where life happens.



Floor Area: 227m<sup>2</sup>

2  
 5  
 2.5  
 1  
 27.6m  
 9.4m

Contact us

Call Ben: 027 315 9165

E: [hello@falloonbuilders.co.nz](mailto:hello@falloonbuilders.co.nz)

[www.falloonbuilders.co.nz](http://www.falloonbuilders.co.nz)